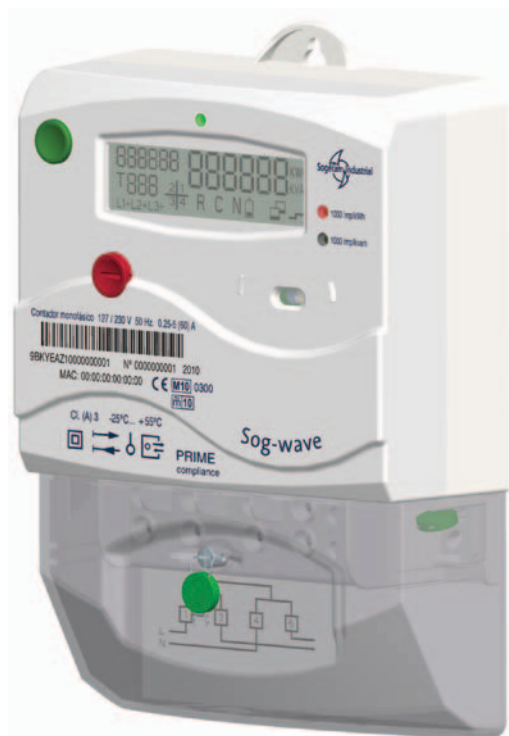


Sogwave PRIME Digital Smart Meter

We're not just ready for today; our meter is prepared for your future needs.



Key features:

- Latest generation domestic electricity meter (up to 15kw)
- Lowest power consumption in the market (< 2W)
- Fully certified and compliant with industry standards
- Telecontrol and time selection
- Communication via PLC
- COM-RS232 port compatible with other technologies
- Active energy class A and reactive energy class 3
- One of the smallest and most compact designs available

Our Sogwave digital smart meter boasts an energy-efficient design with low consumption to keep your costs to a minimum. We also include an RS232 port as standard to allow use with other technologies.

Technical standards:

- PRIME
- DLMS/COSEM
- COMPANION STANDARD
- CE and CENELEC

Further technical characteristics:

Multiple range input: 127AC/230AC (50Hz)
Base current: 0.25-5A (60A), 1000 pulses per kWh (active) and 1000 pulses per kVARh (reactive)
Temperature range: -25°C to 60°C
Size: 193 x 139 x 59mm (HxWxD)
Consumption: < 2W
Data storage
Optical Port

Information purposes only. Please see the technical specifications.